



BEST NEW ITEMS

- DECEMBER 2020 -

FREE SHIPPING

On All Orders in 2020

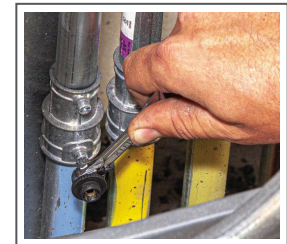


Klein Slim-Profile Mini Ratchet Set, 5/PC

#11415

The perfect tool for tight spaces where other tools can't fit. The tool features 1/4" and 5/16" nut drivers on either side of the head. The 1/4" dual-drive head accepts driver or socket bits. This set includes a bit holder with a 1/4" adapter, #1 and #2 Phillips bits, and 3/16" and 1/4" slotted bits.

- 72-tooth ratchet only needs a 5-Degree sweep for tight areas
- High-strength, steel construction increases torque and tool life
- Ring magnet and bit clip for better bit retention
- Finger loop provides one-hand driving and convenient storage
- Directional switch ratchet for loosening and tightening
- 4.33" Overall Length



Scan for product video

Nebo OMNI 2K Directional Work Light

#10950

This omni directional work light boasts a powerful 2,000 lumens. It features magnetic handles to provide a convenient carry and a sturdy base for hands-free light. Each COB panel and magnetic handle rotate to give light everywhere that you need it. The dimmer controls give you the right amount of light. Completely rechargeable, the OMNI 2K also features a power bank to charge your USB powered devices.

- | | |
|---|---|
| ■ USB-C rechargeable | 6 LIGHT MODES |
| ■ 4,000mAh power bank | ■ Dual COB (2000 lumens) - 1.3 hours / 70 meters |
| ■ Water and impact-resistant | ■ Dual COB (250 lumens) - 5.5 hours / 22 meters |
| ■ Non-slip rubber coating | ■ Single COB (1100 lumens) - 2 hours / 50 meters |
| ■ Battery charging indicator | ■ Single COB (150 lumens) - 9 hours / 18 meters |
| ■ Rear-positioned ON/OFF button and 2 buttons for adjustable brightness | ■ Red COB (20 lumens) - 11 hours / 8 meters |
| | ■ Red COB Flash (20 lumens) - 20 hours / 8 meters |



NEBO

SharkBite Frost Free Anti-Siphon Silcock

Protect the valve from freezing conditions and from potential back pressure and contaminated water flowing back into the main line. These silcocks have an integrated 1/2" push-to-connect inlet that is compatible with PEX, copper, CPVC, PE-RT and HDPE pipes and a 3/4" garden hose outlet. The silcock comes with an integrated vacuum breaker to prevent backflow and a mounting flange to secure the valve. Innovative push-to-connect design makes for quick and easy installation. Ideal for working in tight spaces.

- No special tools, crimping, glue or soldering required
- Approved for behind-the-wall applications
- Can be installed in wet lines
- Can be rotated for easier and faster installation

99154256	1/2" Push X 3/4" MHT - 8"
76754	1/2" Push X 3/4" MHT - 10"
76753	1/2" Push X 3/4" MHT - 12"
99154257	1/2" Push X 3/4" MHT - 15"
99154258	1/2" Push X 3/4" MHT - 18"



Ph: 800-448-6710
Fax: 800-700-2378



For the month of November, Best donated to the Responder Rescue organization.



BEST FEATURED ITEMS



WHOLE DAY PERSONAL PROTECTION KIT

#99154210



Stay safe the whole day! This kit contains essential wear recommended by the CDC to help protect against viruses and bacteria. It includes a 3-ply face mask, 3 sets of heavy-duty nitrile gloves and 3 individual packed sanitizing wipes.

FRICION FIXER DRY SILICONE LUBRICANT SPRAY 16OZ

#97919



Friction Fixer is an odorless, food grade lubricant that gives long lasting protection on most surfaces. It works excellently on plumbing fixtures, hinges, door latches, storm doors, windows, snow shovels, blowers and plows, belts, vehicles, and much more. [pg.6-80](#)

- Inhibits Rust
- Stops Corrosion
- Stops Sticking
- Dries Quickly
- Stainless
- Easy to Use



Scan here for SDS

Active Ingredients: Tetrachloroethylene



KORKY STRONGARM UNIVERSAL TANK LEVER

#53317



Designed to fit the majority of toilets, the Korky Strongarm Lever easily adjusts to fit all toilet tank positions including: front, side, angle, right and down. Optimized for use with both 2" and 3" toilet flappers and canister-style flush valves, the engineer grade material in common stress areas performs as well as brass and aluminum levers. The lever is adjustable to eliminate the need to bend for fitting and fits most popular brands, including American Standard, Kohler, TOTO and others.

[pg. 5-19](#)

- Fixes broken, sticking and corroded handles and outdated designs
- Quick and easy install, no need to bend for fitting
- Reinforced lever arm for strength and long life
- Corrosion resistant - guaranteed not to rust

Includes:

- (1) Chrome Handle
- (1) Tank Lever Arm
- (2) Locking Clips
- (1) Stainless Steel Lanyard Hook

Did You Know Best Carries ...



Gauges

BEST offers hundreds of gauges with different applications and features:

Pressure Gauges

Liquid filled, Front Mount, Back Mount CP, Stainless Steel, Plastic, and Aluminum Casing Options

Temperature Gauges

Solar Powered, Remote Mounted Direct Mounted, Tridicators, Compact *And more!*

[pg. 9-12](#)

Ask your Sales Rep today and be ready for the winter season!

1.6 & 1.0 Regal Drop In Master Kit #25205

Contains 80 Sloan Regal Flushometer Repair Parts including Handle Repair Kits, O-rings, Spuds, Urinal Kits, and Low Consumption Kits [pg. 2-20](#)



Don't Forget Batteries

[pg. 10-51](#)



#10998 AAA Procell Battery

#10974 AA Procell Battery

#10975 C Procell Battery

#10964 D Procell Battery

#10969 9V Procell Battery

#10965 6V Procell Lantern Battery Standard

#10944 AA Lithium Battery (PK/2)

#10995 AAAA Battery (PK/2)

#99084046 3V Lithium Photo Battery